



# QUICK AND ACCURATE MEASURING

## PROFESSIONAL RELIABILITY

The APQ600e is a handheld solution that provides quality infrared images to meet professional thermography field requirements. It has a wide temperature range from  $-20^{\circ}\text{C}$  to  $550^{\circ}\text{C}$  ( $-4^{\circ}\text{F}$  to  $1022^{\circ}\text{F}$ ) allowing for electrical and HVAC inspections as well as automotive maintenance. Enable the center/highest/lowest temperature point and alarming features to assist in detecting critical failures. The laser pointer helps accurately target potential faults. Use the APQ600e to troubleshoot repairs and monitor processes to assure your team that machinery and systems are functioning safely and at peak efficiency.

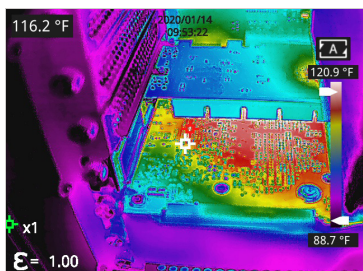


APQ600e



## RUGGED FOR HEAVY USE

Rated IP54 to protect against dirt, dust, and other non-corrosive materials. 2 m (6.56') drop-rating to withstand the rigors of tough inspections. Each APQ600e is shipped with two 4500 mAh batteries and a charging dock to recharge batteries on-the-go and meet the requirements of heavy daily use.



## QUALITY THERMAL IMAGES

Provides 384 x 288 quality resolution thermal images. Captures visible images with 5 MP digital camera. Features manual adjustment for clear and precise focus. Features 4 image modes: picture-in-picture, visible, infrared and fusion for situational awareness and target location. 7 color palettes to enhance viewing and easily find hot spots. Save images to the provided MicroSD card.



## EASY TO USE

Quick start instruction guide provided. No additional training required. One-handed, 5-button easy operation for fast inspections. Use handheld or on a tripod. Features a 3.5" LCD high definition ( $640 \times 480$ ) capacitive touch screen with adjustable screen brightness for on the spot analysis. Utilize the Type-C connector to plug-and-play streaming to an external device.



# APQ600E

The APQ600e is a handheld solution that provides high temperature measuring from -20 °C to 550 °C (-4°F to 1022°F) and an accuracy of ± 2°C (± 3.6°F) or ± 2%. Provides stellar 384 x 288 images with manual focus provides clear, sharp images of targets from near to far, but especially close-up. Meets requirements for many fields, including building inspections and vehicle maintenance. This makes the APQ600e adaptable to various thermal applications. Stream media to a PC using the USB Type-C connector.

## Features

- Touchscreen, 3.5" color LCD
- Central spot, hot spot and cold spot tracing
- Click-and-drag temperature measurement
- High-temperature measuring
- Single-handed operation with 5-button design
- Alarm threshold settings
- 4 Image modes available
- 2 m (6.56') drop protection
- Voice annotation
- Small size
- Light weight

## Applications

- Electrical poles
- Electrical inspections
- Process control
- Plant/General maintenance
- Industrial vision systems
- Transportation/Automotive
- HVAC/AC
- Home/building Inspections
- Building automation

## Accessories

- USB Cable
- 32 GB Micro-SD card
- Charging dock
- 2 batteries
- Microphone with noise cancellation (built-in)
- 1/4"-20 tripod support (built-in)

## Specifications

- **Pixel Resolution:** 384 x 288
- **Accuracy:** ± 2°C (± 3.6°F) or ± 2%
- **Temperature Range:** -20 °C to 550 °C (-4°F to 1022°F)
- **Operation Range:** -10 °C to 50 °C (14°F to 122°F)
- **Storage Range:** -20 °C to 60 °C (-4°F to 140°F)
- **Detector Array:** FPA (VOx)
- **Pixel Pitch:** 12 µm
- **FOV:** 43.7° x 31.9°
- **I FOV:** 1.98 mrad
- **Focal Length:** 3.2 mm
- **Focus:** manual
- **Spectral Band:** 8 µm to 14 µm
- **Thermal Sensitivity (NETD):**  
< (50 mK) 0.05 °C at 30 °C (86°F)
- **Frame Rate:** 25 Hz
- **Humidity:** 10% to 95% non-condensing
- **Pixel Operability:** > 99 %
- **Drop Rating:** 2 m (6.56')
- **Shock/Vibration:** 25 G/2G
- **Dimensions (without lens):**  
256.4 mm x 105.1 mm x 105.3 mm (L x W x D ± 0.5 mm)  
(10.09" x 4.14" x 4.15" (L x W x H ± 0.02"))
- **Power:** 5V DC 2A
- **Battery:** Li-ion, rechargeable/replaceable
- **Operation Time:** 4 hours
- **Charging Time:** 3 hours
- **Weight (without lens):** 670 g (1.48 lbs)
- **Interface:** USB Type-C, Micro SD
- **Video Format:** H.264 (without data)
- **Image Format:** IR JPG (with data) + visible JPG
- **Image Polarity:** 7 options
- **Image Modes:** IR, fusion, picture-in-picture, visible
- **Data Transmission:** USB Type-C
- **Memory:** MicroSD card (up to 64 GB)
- **Screen:** 3.5" color LCD touchscreen, 640 x 480
- **Brightness:** adjustable
- **Digital Camera:** 5 MP
- **Zoom:** 2x, 4x, 8x
- **Emissivity Correction:** 0.01 to 1.0
- **Measurement Units:** °C, °F, °K
- **IP Rating:** IP54
- **Laser:** Class II 650 nm, < 1 mW
- **Language:** multi-language
- Automatic alarms
- Internal non-uniformity correction (NUC)
- Voice Annotation
- Media streaming to PC via USB Type-C